

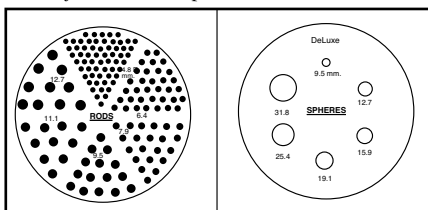
JASZCZAK FLANGELESS SPECT PHANTOM

ECT phantom for SPECT, meets ACR requirements



Flangeless SPECT Phantom

Inserts for PET and Spect Phantoms



Cold Rods

Cold Spheres

The Flangeless SPECT Phantom and the Flangeless PET Phantom meet the requirements set by ACR. The appropriate phantoms provide consistent performance information for any

SPECT or PET system. The SPECT Phantom is the same as the Deluxe SPECT Phantom except that the flanges have been removed. Multiple performance characteristics of camera-based SPECT systems are evaluated from a single scan of the phantom.

On-axis and off-axis transverse line spread function may be easily measured without removing the cover plate. Measurements of full-width-half (or tenth) maximum can be readily determined, either in air or in water.

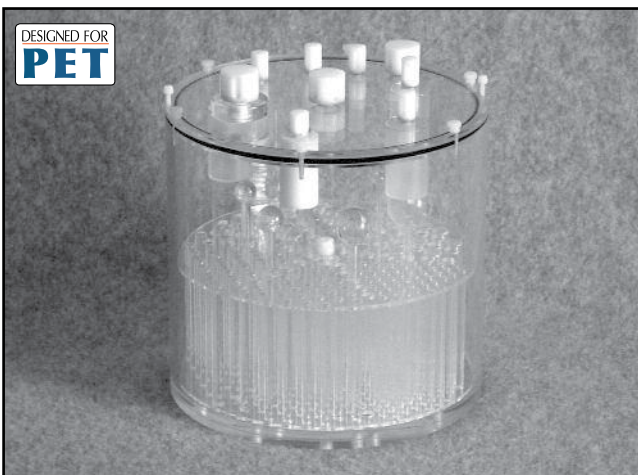
The Phantom is used for:

- System performance valuation of:
 - Collimator, Artifacts, Calibration, and Reconstruction Parameters
- Acceptance testing
- Routine quality, assurance and control
- Evaluation of center-of-rotation error
- Evaluation of non-uniformity artifact
- Evaluation of changes of radius-of-rotation on spatial resolution
- Evaluation of reconstruction filters on spatial resolution
- Evaluation of attenuation and scatter compensation
- Single slice volume sensitivity
- Total system volume sensitivity
- Lesion detectability

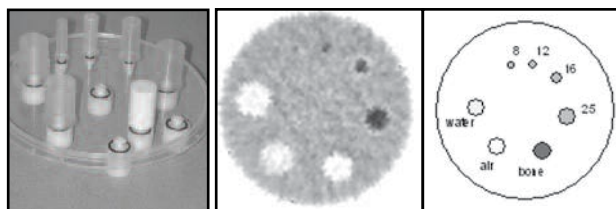
The Flangeless SPECT Phantom is used for high resolution

ESSER FLANGELESS PET PHANTOM

ECT phantom for PET, meets ACR requirements



Flangeless PET Phantom™



Flangeless PET Phantom Lid™

Image of PET Phantom Lid

PET Phantom Lid Containers

SPECIFICATIONS:

SPECT and PET Phantoms:

- Cylinder Interior Dimensions: 8" dia x 7.32" h (20.4 x 18.6 cm)
- Cylinder Wall Thickness: 0.25" (6.4 mm)
- Volume: 6.4 L
- Volume With Inserts: 5.7 L
- Cold Rod Insert Height: 3.46" h (8.8 cm)
- Cold Rod Dimensions: 4.8 mm, 6.4 mm, 7.9 mm, 9.5 mm, 11.1 mm, 12.7 mm
- Height of Spheres From Base Plate: 5" h (12.7 cm)
- Solid Sphere Diameters: 9.5mm, 12.7 mm, 15.9 mm, 19.1 mm, 25.4 mm, 31.8 mm

Flangeless Esser PET Phantom Lid™

- Refillable thin-walled cylinders: 8,12,16,25 (x3)mm
- Solid cylinder (Teflon®): 25mm
- Cylinder height: 1.5 in

043-765 Phantom, SPECT, Flangeless

043-772 Phantom, PET, Flangeless

Related:

043-730 Phantom Insert, Triple Line

043-777 Phantom Insert, Cardiac

Phantom inserts are featured on page 93.

800.409.2688



technologyimaging.com