



Your Premier Global Source for Molecular Imaging Quality Control Devices

Dear RadQual Customer,

- We're pleased that you're a RadQual customer and we genuinely appreciate your business.
- **Returns are only accepted at 4137 Commerce Circle, Idaho Falls, ID 83401** in accordance our contract manufacturers.
- This Return Forms & Labels Package provides everything you'll need to easily and legally return UN2915 and UN2910 spent sources for disposal.
- Be sure to read instructions carefully as you complete these forms.

How to determine if your package is shipped as a UN2910 Package or a UN2915 Package:

Conduct a radiation dose rate survey on each surface of all 6 sides of your package. Measurements are based on nuclides not exceeding limited specified under 49 CFR 173.425.

- If your surface reading is greater than .5 mrem/hr, but less than 50 mrem/hr, you must ship your package as a **UN2915**.
- If your surface reading is less than .5 mrem/hr, you can ship your package as a **UN2910**.
- If your surface reading is greater than 50 mrem/hr, contact your Radiation Safety Officer [RSO].

Forms and labels referenced in this package:

Section 1: Emergency Response Information

Form a: Example of Emergency Response Information Guide 162
Download a readable/printable guide at:
www.radqual.com/returns/Guide162

Section 2: UN2915 – Package Return Information

Form b: Shipper's Declaration for Dangerous Goods Templates
To ship, ALL declarations *must* have a **red candy striped border**.
Click the link below to download & print a Fedex declaration form with the candy striped border. You'll need a color printer.

<http://www.fedex.com/us/services/pdf/ShippersDecNoColumnsColorPrinter.pdf>

Do you have pre-printed candy striped paper?
Click the link below to download & print a Fedex declaration form with NO candy striped border:

<http://www.fedex.com/us/services/pdf/ShippersDecNoColumnsBWPrint>

Label c: Example of a DOT Type A Box Marking Return Label

Label d: Printable Cargo Aircraft Only Label

Label e: Printable Return Mailing Label

Section 3: UN2910 – Excepted Package Return Information

Label f: Printable Excepted Package Label

Label g: Printable Return Mailing Label

Need further assistance?:

- Most of these forms and labels are available at www.radqual.com/returns.
- Unable to access our website? Please call 603.513.1221 for customer assistance between 9:00 am and 5:00 pm EST.
- Please note that returns are only accepted at 4137 Commerce Circle, Idaho Falls, ID 83401 in accordance our contract manufacturers.

*What the
numbers
mean:*

UN2915 Package

Sources with low radiation levels – 50 mrem / hr (0.43 mSv / hr) maximum on surface; 1 mrem / hr (8.7 μ Sv / hr) maximum at 1 meter.

UN2910 Excepted Package

Instruments and manufactured articles such as clocks, electronic tubes, or apparatus having radioactive material as a component part.



Proper training is required under international, federal and/or state regulations to offer for shipment or transport dangerous goods and/or hazardous materials.

All persons and entities must comply with all federal regulations, including but not limited to the specific training requirements of 49 CFR § 172.700 - 172.704.

IF YOU HAVE NOT BEEN TRAINED, CONTACT YOUR RADIATION SAFETY OFFICER.

RadQual and their contract manufacturer provide these materials as a service to be used as guidelines to assist properly trained shippers. The materials provided by RadQual and their contract manufacturers in no way alters or satisfies any federal training requirements. The attached information provided does not meet the training requirements as required by DOT 49 CFR.

The study and/or use of these materials do not qualify an individual to prepare, package, transport or otherwise handle dangerous goods or hazardous materials.

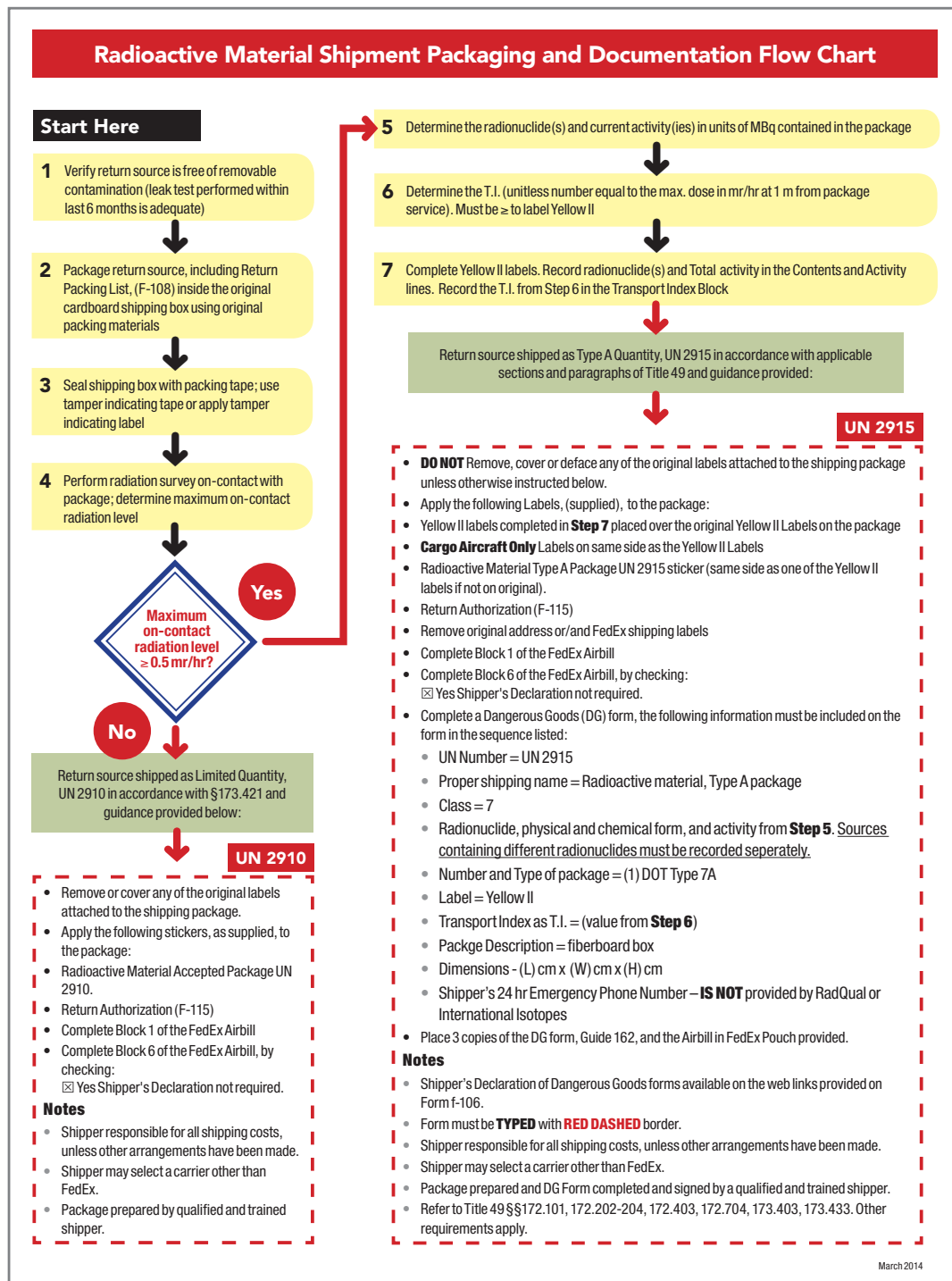
The information provided with this document is subject to change or update due to changing government regulations.

The user(s) of this document assumes responsibility for complying with all applicable laws and regulations regarding the shipment of Dangerous Goods.

RadQual or their contract manufacturer shall not be held responsible for any loss, injury and/or damage caused by errors, omissions, misprints or misrepresentations of the contents of these documents for any unauthorized or inappropriate use.

Radioactive Material Shipment Packaging and Documentation Flow Chart

Download this form at www.radqual.com/returns/flowchart





Your Premier Global Source for Molecular Imaging Quality Control Devices

Section 1: Emergency Response Information

Example of Emergency Response Information Guide 162

To download Guide 162, point your browser to: www.radqual.com/returns/guide162

GUIDE
162

RADIOACTIVE MATERIALS
(LOW TO MODERATE LEVEL RADIATION)

ERG2012

POTENTIAL HAZARDS

HEALTH

- Radiation presents minimal risk to transport workers, emergency response personnel and the public during transportation accidents. Packaging durability increases as potential hazard of radioactive content increases.
- Undamaged packages are safe. Contents of damaged packages may cause higher external radiation exposure, or both external and internal radiation exposure if contents are released.
- Low radiation hazard when material is inside container. If material is released from package or bulk container, hazard will vary from low to moderate. Level of hazard will depend on the type and amount of radioactivity, the kind of material it is in, and/or the surfaces it is on.
- Some material may be released from packages during accidents of moderate severity but risks to people are not great.
- Released radioactive materials or contaminated objects usually will be visible if packaging fails.
- Some exclusive use shipments of bulk and packaged materials will not have "RADIOACTIVE" labels. Placards, markings and shipping papers provide identification.
- Some packages may have a "RADIOACTIVE" label and a second hazard label. The second hazard is usually greater than the radiation hazard; so follow this GUIDE as well as the response GUIDE for the second hazard class label.
- Some radioactive materials cannot be detected by commonly available instruments.
- Runoff from control of cargo fire may cause low-level pollution.

FIRE OR EXPLOSION

- Some of these materials may burn, but most do not ignite readily.
- Uranium and Thorium metal outtings may ignite spontaneously if exposed to air (see GUIDE 136).
- Nitrocellulose and nitrocellulose may ignite other combustibles (see GUIDE 141).

PUBLIC SAFETY

- CALL EMERGENCY RESPONSE: Telephone Number on Shipping Paper first. If Shipping Paper not available or no answer, refer to appropriate telephone number listed on the inside back cover.
- Priorities for rescue, life-saving, first aid, fire control and other hazards are higher than the priority for measuring radiation levels.
- Radiation Authority must be notified of accident conditions. Radiation Authority is usually responsible for decisions about radiological consequences and closure of emergencies.
- As an immediate precautionary measure, isolate spill or leak area for at least 25 meters (75 feet) in all directions.
- Stay upwind.
- Keep unauthorized personnel away.
- Detain or isolate uninjured persons or equipment suspected to be contaminated; delay decontamination and cleanup until instructions are received from Radiation Authority.

PROTECTIVE CLOTHING

- Positive pressure self-contained breathing apparatus (SCBA) and structural firefighters' protective clothing will provide adequate protection.

EVACUATION

- Large Spill
 - Consider initial downwind evacuation for at least 100 meters (300 feet).
- Fire
 - When a large quantity of this material is involved in a major fire, consider an initial evacuation distance of 300 meters (1000 feet) in all directions.

Page 262

ERG2012

RADIOACTIVE MATERIALS
(LOW TO MODERATE LEVEL RADIATION)

GUIDE
162

EMERGENCY RESPONSE

FIRE

- Presence of radioactive material will not influence the fire control processes and should not influence selection of techniques.
- Move containers from fire area if you can do it without risk.
- Do not move damaged packages; move undamaged packages out of fire zone.

Small Fire

- Dry chemical, CO₂, water spray or regular foam.

Large Fire

- Water spray, fog (flooding amounts).
- Dike fire-control water for later disposal.

SPILL OR LEAK

- Do not touch damaged packages or spilled material.
- Cover liquid spill with sand, earth or other non-combustible absorbent material.
- Dike to collect large liquid spills.
- Cover powder spill with plastic sheet or tarp to minimize spreading.

FIRST AID

- Call 911 or emergency medical service.
- Medical problems take priority over radiological concerns.
- Use first aid treatment according to the nature of the injury.
- Do not delay care and transport of a seriously injured person.
- Give artificial respiration if victim is not breathing.
- Administer oxygen if breathing is difficult.
- In case of contact with substance, wipe from skin immediately. Flush skin or eyes with running water for at least 20 minutes.
- Injured persons contaminated by contact with released material are not a serious hazard to health care personnel, equipment or facilities.
- Ensure that medical personnel are aware of the material(s) involved, take precautions to protect themselves and prevent spread of contamination.

Page 263



Your Premier Global Source for Molecular Imaging Quality Control Devices

RadQual Products
Return Forms &
Labels Package

b
PAGE

Section 2: UN2915

Example of Shipper's Declaration for Dangerous Goods Form

This FedEx form, with the candy striped border, is required for shipments of hazardous materials. It is designed to meet DOT specifications and may be used domestically as well as internationally.

Click the link below to download & print a Fedex declaration form if you have a color printer:

<http://www.fedex.com/us/services/pdf/ShippersDecNoColumnsColorPrinter.pdf>

Do you have pre-printed candy striped paper? Click the link below to download & print a Fedex declaration form with NO candy striped border:

<http://www.fedex.com/us/services/pdf/ShippersDecNoColumnsBWPrint>

RadQual can also provide this form with your order upon request.

SHIPPER'S DECLARATION FOR DANGEROUS GOODS		(Provide at least three copies to the airline.)					
Shipper Your Name Here		Air Waybill No.					
		Page of Pages					
		Shipper's Reference Number Your Reference					
Consignee International Isotopes, Inc. 4137 Commerce Circle Idaho Falls, ID 83401							
Two completed and signed copies of this Declaration must be handed to the operator		WARNING					
TRANSPORT DETAILS		Failure to comply with all respects with the applicable Dangerous Goods Regulations may be in breach of the applicable law, subject to legal penalties.					
This shipment is within the limitations prescribed for: (delete non applicable)		Airport of Departure					
<table border="1"><tr><td>PASSENGER AIRCRAFT</td><td>CARGO AIRCRAFT ONLY</td></tr><tr><td>XXXX</td><td></td></tr></table>		PASSENGER AIRCRAFT	CARGO AIRCRAFT ONLY	XXXX			
PASSENGER AIRCRAFT	CARGO AIRCRAFT ONLY						
XXXX							
Airport of Destination:		Shipment type: (delete non applicable) XXXXXXXXXXE RADIOACTIVE					
NATURE AND QUANTITY OF DANGEROUS GOODS							
UN Number or Identification Number, proper shipping name, Class or Division (subsidiary risk), packing group (if required), and all other required information.							
UN2915, Radioactive Material, Type A Package, Class 7							
Co-57 Resin Solid, One Type A Package x (value here) MBq							
II Yellow TI = (insert value here)							
Dimensions L= cm x W= cm x H= cm (insert dimensions)							
Additional Handling Information							
This shipment contains radioactive material intended for use in or incident to medical research, diagnosis or treatment.							
I hereby declare that the contents of this consignment are fully and accurately described above by the proper shipping name, and are classified, packaged, marked and labelled/placarded, and are in all respects in proper condition for transport according to applicable International and National Governmental Regulations. I declare that all of the applicable air transport requirements have been met.		Name/Title of Signatory Shipper Name and Title Place and Date Insert Location and Date Signature (A typed signature may be used if the origin and destination are in the United States or its territories.) Signature Required					
EMG Contact		Emergency Telephone Number					
FOR RADIOACTIVE MATERIAL SHIPMENT ACCEPTABLE FOR PASSENGER AIRCRAFT, THE SHIPMENT CONTAINS RADIOACTIVE MATERIAL INTENDED FOR USE IN OR INCIDENT TO RESEARCH, MEDICAL DIAGNOSIS, OR TREATMENT. ADR EUROPEAN TRANSPORT STATEMENT. CARRIAGE IN ACCORDANCE WITH 1.1.4.2.1							

Section 2: UN2915

Pre-printed UN Class 7 Yellow II Label

These are required by 49 CFR 172.500 for highway, rail and water shipments of hazardous materials. They are designed to meet DOT specifications for color and size, and may be used domestically as well as internationally.

Affix the label on a vertical side of the box (not on the top or bottom) oriented as shown

Call RadQual will provide these return labels with your order upon request.



Section 2 | UN2915

Cargo Aircraft Only label

This label should print with the correct dimensions for a 'Cargo Aircraft Only' label. When printed, the minimum dimension should be no smaller than 120 x 100 mm or 4.72" x 3.93". Cut on the dashed line for best results.

Affix the label on a vertical side of the box (not on the top or bottom) oriented as shown. Many printer inks will run when wet, so be sure to cover the label completely with clear plastic tape after you've applied it to the package.

RadQual will provide these return labels with your order upon request.

Download this label and print on a color printer. Go to www.radqual.com/returns/CAOL



Section 2 | **UN2915**

Return Mailing Label

Cut on the dashed line for best results.

Affix the label on a vertical side of the box (not on the top or bottom) oriented as shown. Many printer inks will run when wet, so be sure to cover the label completely with clear plastic tape after you've applied it to the package. 4 x 3.5

RadQual will provide these return labels with your order upon request.

RadQual will provide these return labels with your order upon request or download this label www.radqual.com/returns/RML

RA#:



International Isotopes, Inc.

4137 COMMERCE CIRCLE,
IDAHO FALLS, ID 83401

International Isotopes, Inc.
4137 COMMERCE CIRCLE,
IDAHO FALLS, ID 83401



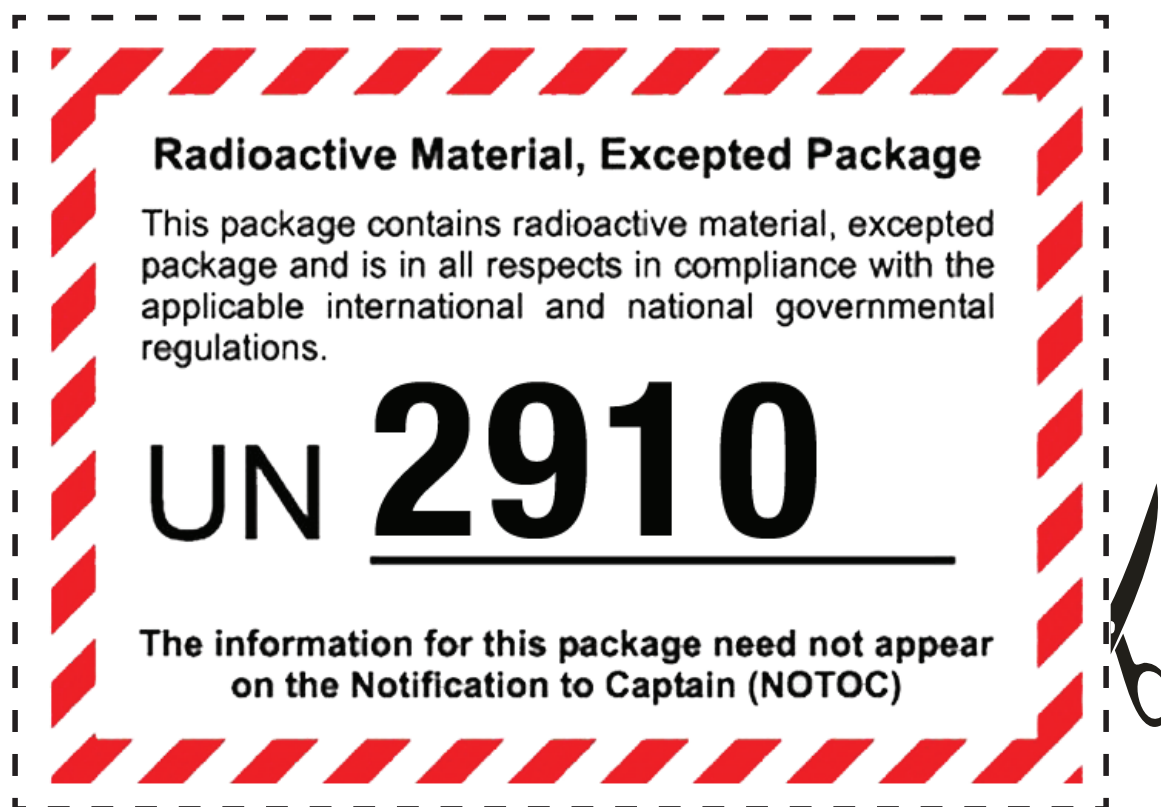
Section 3 | UN2910 - Excepted Package Return Information

Excepted Package Label

Cut on the dashed line for best results.

Affix the label on a vertical side of the box (not on the top or bottom) oriented as shown. Many printer inks will run when wet, so be sure to cover the label completely with clear plastic tape after you've applied it to the package.

RadQual will provide these return labels with your order upon request or download this label at www.radqual.com/returns/EPL



Radioactive Material, Excepted Package

This package contains radioactive material, excepted package and is in all respects in compliance with the applicable international and national governmental regulations.

UN 2910

The information for this package need not appear on the Notification to Captain (NOTOC)

A dashed line indicates where to cut. A scissors icon is shown on the right side of the label.

Section 3 | **UN2910**

Return Mailing Label

Cut on the dashed line for best results.

Affix the label on a vertical side of the box (not on the top or bottom) oriented as shown. Many printer inks will run when wet, so be sure to cover the label completely with clear plastic tape after you've applied it to the package.

The RA# is your order number.

RadQual will provide these return labels with your order upon request or download this label www.radqual.com/returns/RML

RA#:



International Isotopes, Inc.
4137 COMMERCE CIRCLE,
IDAHO FALLS, ID 83401

International Isotopes, Inc.
4137 COMMERCE CIRCLE,
IDAHO FALLS, ID 83401

